

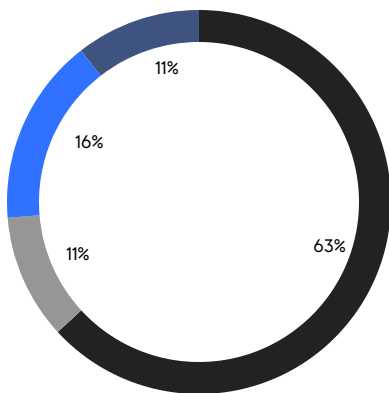
# BROOKLYN WEEKLY LUXURY REPORT



144 BALTIC STREET

RESIDENTIAL CONTRACTS  
\$2 MILLION AND UP

- NORTHWEST BROOKLYN
- SOUTH BROOKLYN
- EAST BROOKLYN
- NORTH BROOKLYN



19

CONTRACTS SIGNED  
THIS WEEK

\$71,017,999

TOTAL CONTRACT VOLUME

The Brooklyn luxury real estate market, defined as all properties priced \$2M and above, saw 19 contracts signed this week, made up of 6 condos, and 13 houses. The previous week saw 14 deals. For more information or data, please reach out to a Compass agent.

**\$3,737,790**

AVERAGE ASKING PRICE

**\$2,900,000**

MEDIAN ASKING PRICE

**\$1,320**

AVERAGE PPSF

**1%**

AVERAGE DISCOUNT

**\$71,017,999**

TOTAL VOLUME

**151**

AVERAGE DAYS ON MARKET

19 Montgomery Place in Park Slope entered contract this week, with a last asking price of \$15,000,000. This townhouse spans 6,204 square feet with 6 beds and 5 full baths. It features a 30-foot-wide footprint, a recent 3-year gut renovation, gas fireplaces, open living space and dining area, a custom kitchen with walnut cabinetry and high-end appliances, high ceilings, a steel and glass deck with staircase leading to the landscaped garden, and much more.

Also signed this week was 67 Remsen Street in Brooklyn Heights, with a last asking price of \$6,950,000. This townhouse spans approximately 6,000 square feet with 5 beds and 4 full baths. It features white oak wide-plank flooring throughout, a commercial-grade elevator, high ceilings, oversized windows, a large chef's kitchen with custom cabinetry, a full-floor primary suite with custom closet, and much more.

**6**

CONDO DEAL(S)

**0**

CO-OP DEAL(S)

**13**

TOWNHOUSE DEAL(S)

**\$2,501,667**

AVERAGE ASKING PRICE

**\$0**

AVERAGE ASKING PRICE

**\$4,308,308**

AVERAGE ASKING PRICE

**\$2,520,000**

MEDIAN ASKING PRICE

**\$0**

MEDIAN ASKING PRICE

**\$2,999,999**

MEDIAN ASKING PRICE

**\$1,652**

AVERAGE PPSF

**\$1,121**

AVERAGE PPSF

**1,520**

AVERAGE SQFT

**4,037**

AVERAGE SQFT



### 19 MONTGOMERY PL

Park Slope

TYPE	TOWNHOUSE	STATUS	CONTRACT	ASK	\$15,000,000	INITIAL	\$15,000,000
SQFT	6,204	PPSF	\$2,418	BEDS	6	BATHS	5
FEES	\$5,296	DOM	140				



### 67 REMSEN ST

Brooklyn Heights

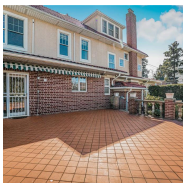
TYPE	TOWNHOUSE	STATUS	CONTRACT	ASK	\$6,950,000	INITIAL	\$8,995,000
SQFT	6,000	PPSF	\$1,158	BEDS	5	BATHS	4
FEES	\$4,430	DOM	539				



### 411 SACKETT ST

Carroll Gardens

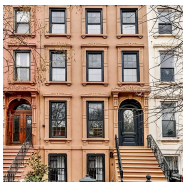
TYPE	TOWNHOUSE	STATUS	CONTRACT	ASK	\$5,295,000	INITIAL	\$5,295,000
SQFT	4,010	PPSF	\$1,321	BEDS	6	BATHS	3.5
FEES	\$1,615	DOM	23				



### 8320 RIDGE BLVD

Bay Ridge

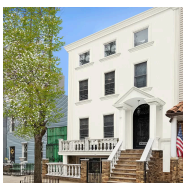
TYPE	TOWNHOUSE	STATUS	CONTRACT	ASK	\$3,699,000	INITIAL	\$3,750,000
SQFT	4,474	PPSF	\$827	BEDS	6	BATHS	N/A
FEES	\$1,664	DOM	73				



### 236A PUTMAN AVE

Bedford Stuyvesant

TYPE	TOWNHOUSE	STATUS	CONTRACT	ASK	\$3,250,000	INITIAL	\$2,150,000
SQFT	4,124	PPSF	\$789	BEDS	6	BATHS	4
FEES	\$353	DOM	712				



### 191 AINSLIE ST

Williamsburg

TYPE	TOWNHOUSE	STATUS	CONTRACT	ASK	\$3,200,000	INITIAL	\$3,500,000
SQFT	3,774	PPSF	\$848	BEDS	5	BATHS	4.5
FEES	\$438	DOM	52				

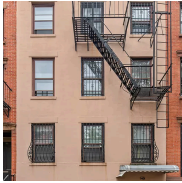
Compass is a licensed real estate broker and abides by Equal Housing Opportunity laws. All material presented herein is intended for informational purposes only. Information is compiled from sources deemed reliable but is subject to errors, omissions, changes in price, condition, sale, or withdrawal without notice. No statement is made as to the accuracy of any description. All measurements and square footages are approximate. This is not intended to solicit property already listed. Nothing herein shall be construed as legal, accounting or other professional advice outside the realm of real estate brokerage.



### 403 8TH ST

Park Slope

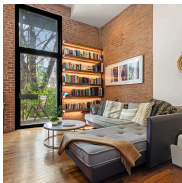
TYPE	TOWNHOUSE	STATUS	CONTRACT	ASK	\$2,999,999	INITIAL	\$3,199,999
SQFT	2,511	PPSF	\$1,195	BEDS	3	BATHS	3
FEES	\$626	DOM	187				



### 140 HOYT ST

Boerum Hill

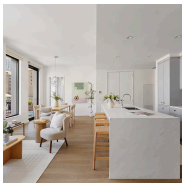
TYPE	TOWNHOUSE	STATUS	CONTRACT	ASK	\$2,995,000	INITIAL	\$3,500,000
SQFT	2,979	PPSF	\$1,006	BEDS	7	BATHS	4
FEES	\$799	DOM	235				



### 533 LEONARD ST #1C

Greenpoint

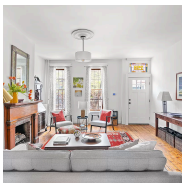
TYPE	CONDO	STATUS	CONTRACT	ASK	\$2,995,000	INITIAL	\$2,995,000
SQFT	1,573	PPSF	\$1,905	BEDS	2	BATHS	3
FEES	\$2,337	DOM	32				



### 465 PACIFIC ST #PHB

Boerum Hill

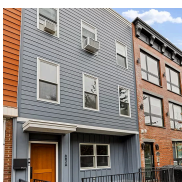
TYPE	CONDO	STATUS	CONTRACT	ASK	\$2,900,000	INITIAL	\$3,100,000
SQFT	1,495	PPSF	\$1,940	BEDS	3	BATHS	3
FEES	\$3,636	DOM	77				



### 298 14TH ST

Park Slope

TYPE	TOWNHOUSE	STATUS	CONTRACT	ASK	\$2,750,000	INITIAL	\$2,880,000
SQFT	N/A	PPSF	N/A	BEDS	3	BATHS	2
FEES	\$300	DOM	45				



### 682A 6TH AVE

Greenwood

TYPE	TOWNHOUSE	STATUS	CONTRACT	ASK	\$2,595,000	INITIAL	\$2,700,000
SQFT	2,800	PPSF	\$927	BEDS	4	BATHS	4
FEES	\$735	DOM	143				

Compass is a licensed real estate broker and abides by Equal Housing Opportunity laws. All material presented herein is intended for informational purposes only. Information is compiled from sources deemed reliable but is subject to errors, omissions, changes in price, condition, sale, or withdrawal without notice. No statement is made as to the accuracy of any description. All measurements and square footages are approximate. This is not intended to solicit property already listed. Nothing herein shall be construed as legal, accounting or other professional advice outside the realm of real estate brokerage.





### 465 PACIFIC ST #4B

Boerum Hill

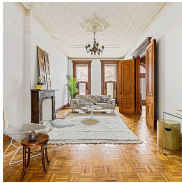
TYPE	CONDO	STATUS	CONTRACT	ASK	\$2,545,000	INITIAL	\$2,695,000
SQFT	1,367	PPSF	\$1,862	BEDS	3	BATHS	3
FEES	\$3,326	DOM	73				



### 686 CARROLL ST #1

Park Slope

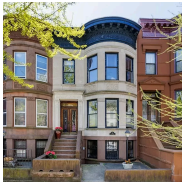
TYPE	CONDO	STATUS	CONTRACT	ASK	\$2,495,000	INITIAL	N/A
SQFT	1,697	PPSF	\$1,471	BEDS	2	BATHS	2.5
FEES	\$1,092	DOM	N/A				



### 72 HALSEY ST

Bedford Stuyvesant

TYPE	TOWNHOUSE	STATUS	CONTRACT	ASK	\$2,485,000	INITIAL	\$2,485,000
SQFT	3,491	PPSF	\$712	BEDS	6	BATHS	3
FEES	\$450	DOM	64				



### 166 RUTLAND RD

Prospect Lefferts Gardens

TYPE	TOWNHOUSE	STATUS	CONTRACT	ASK	\$2,400,000	INITIAL	\$2,400,000
SQFT	N/A	PPSF	N/A	BEDS	3	BATHS	3
FEES	\$618	DOM	31				



### 4676 BEDFORD AVE

Sheepshead Bay

TYPE	TOWNHOUSE	STATUS	CONTRACT	ASK	\$2,389,000	INITIAL	\$2,499,000
SQFT	N/A	PPSF	N/A	BEDS	5	BATHS	2.5
FEES	N/A	DOM	168				



### 509 PACIFIC ST #3E

Boerum Hill

TYPE	CONDO	STATUS	CONTRACT	ASK	\$2,075,000	INITIAL	\$2,075,000
SQFT	1,445	PPSF	\$1,436	BEDS	3	BATHS	2
FEES	\$3,746	DOM	86				

Compass is a licensed real estate broker and abides by Equal Housing Opportunity laws. All material presented herein is intended for informational purposes only. Information is compiled from sources deemed reliable but is subject to errors, omissions, changes in price, condition, sale, or withdrawal without notice. No statement is made as to the accuracy of any description. All measurements and square footages are approximate. This is not intended to solicit property already listed. Nothing herein shall be construed as legal, accounting or other professional advice outside the realm of real estate brokerage.



### 105 BUTLER ST #3

Boerum Hill

TYPE	CONDO	STATUS	CONTRACT	ASK	\$2,000,000	INITIAL	\$2,000,000
SQFT	1,541	PPSF	\$1,298	BEDS	3	BATHS	2
FEES	\$758	DOM	23				

Compass is a licensed real estate broker and abides by Equal Housing Opportunity laws. All material presented herein is intended for informational purposes only. Information is compiled from sources deemed reliable but is subject to errors, omissions, changes in price, condition, sale, or withdrawal without notice. No statement is made as to the accuracy of any description. All measurements and square footages are approximate. This is not intended to solicit property already listed. Nothing herein shall be construed as legal, accounting or other professional advice outside the realm of real estate brokerage.

© 2024 Compass. This report and information provided in this report are proprietary to Compass and may not be sold, used or reprinted, in whole or part, without the prior written consent in each instance of Compass. Data is subject to revision. Sourced from Compass proprietary database. All rights reserved.

[compass.com](https://www.compass.com)